

OCUL

Ontario Council of
University Libraries

OCUL's quarterly catch-up... read about what's new at Scholars Portal, announcements from our member libraries and future OCUL plans and initiatives

Issue No. 4 Summer/Fall 2011

Scholars Portal Updates

New service launches, new staff tools, new LibGuides and new content for journals and books...



Page 2

Scholars GeoPortal Beta

Learn more about our new data discovery tool and how you can share your questions and feedback

Page 3

Of Note...

An update on preservation, staffing changes, and a new communications vehicle for Public Services staff



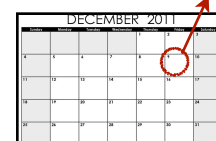
Page 4

Upcoming Events

Some key dates for fall

Scholars Portal Day

Dec. 9th



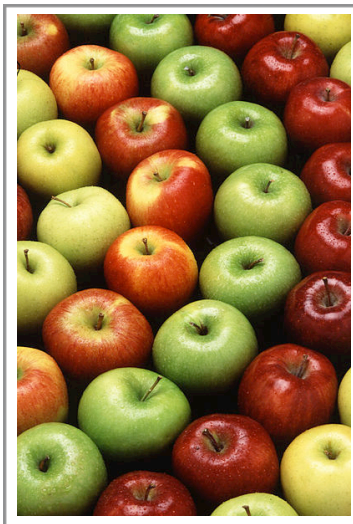
Page 4

A World-Class Learning Experience

Welcome back to school! In this issue of the Quarterly we have news about some great new OCUL services.

In late August, we soft-launched the **Scholars GeoPortal** for OCUL librarians and staff. Fall 2011 will be the season for staff to kick the tires on this new system before it launches more widely in the new year. Congratulations to the OCUL project teams, Scholars Portal staff, and ESRI Canada (our software vendor) on achieving this key milestone.

In early September, we'll launch **Ask a Librarian**, the OCUL virtual chat reference service, at six of our member schools. We're planning for more libraries to join this service in the coming months. Improving learning experiences by ensuring maximum accessibility and supporting library users, wherever they are, is a strategic goal for OCUL and collaborating to provide better services is what OCUL is all about.



We've added some great new functionality for accessing our collection, providing clear information to students, faculty and staff about usage rights for the digital resources provided by their libraries. This information will assist our users in making informed choices about using library resources for course packs, e-reserves, inter-library loans and, of course, printing and photocopying.

In this issue you will also meet some of the new Scholars Portal team members who are working with our OCUL Committees and Groups to actualize our shared vision of creating the ultimate learning environment for students and faculty in Ontario.

I wish you the best as you prepare for the arrival of the 2011 / 12 academic year, and look forward to your feedback about how these new initiatives are impacting your work, your libraries and your users.

Leslie Weir

Leslie Weir, Chair, OCUL
University Librarian, University of Ottawa

P.S.

Welcome Larry Alford!

In August Larry Alford joined the University of Toronto as Chief Librarian. He has also joined the OCUL Directors Committee. On behalf of OCUL, I'd like to offer a warm welcome to Larry, and congratulations on his new role.

Talk to us! Have a comment or an idea for the Quarterly? Contact Kerry Kelly: kerry.kelly@ocul.on.ca

Virtual Reference

Ask a Librarian

Coming September 12



On September 12, 2011 OCUL's new virtual reference service will begin serving Ontario university students at seven locations.

Through the *Ask a Librarian* chat service, students will be able to access research help from any location, as long as they have access to the Internet.

Scholars Portal's *Ask a Librarian* chat brings together the expertise of academic librarians and library staff as well as interns who are current students or recent graduates of Ontario's Information Studies programs. The internship program will also offer interns a unique opportunity to put into practice what they have learned in their reference courses, and to engage with working librarians and library staff from across the province.

Klara Maidenberry, Scholars Portal's Virtual Reference Librarian, will be coordinating intern training sessions in Toronto during the first week of September.

Ask a Librarian is the latest example of the collaborative vision central to OCUL initiatives. The service is the product of work taken on by the new [Virtual Reference Group](#) supported by the Scholars Portal Operations Team and colleagues at University of Guelph, the University of Guelph-Humber, Lakehead University, University of Toronto, Ryerson University, University of Windsor, and York University.

Promotional materials will be sent to the participating schools at the end of August.

To request additional materials contact Kerry Kelly: kerry.kelly@ocul.on.ca

For more information on the project contact Klara Maidenberry: klara@scholarsportal.info

Promoting Canadian Content

UTP Journals

University of Toronto Press (UTP) journals are now available on [Scholars Portal Journals](#).

The full text of 16 UTP journals has been loaded on the platform and a full title list can be viewed by selecting the "University of Toronto Press" link on the following SPOTDocs wiki page: <http://spotdocs.scholarsportal.info/display/EJournals/E-journal+packages+loaded+on+Scholars+Portal> (SPOTDocs login required)

Want to see what else is loaded on the platform?

Visit: <http://spotdocs.scholarsportal.info/display/EJournals/E-journal+packages+loaded+on+Scholars+Portal> (SPOTDocs login required)

New in E-Books

E-books from the following publishers have been recently loaded onto the [Scholars Portal Books](#) Platform:

- ❖ Oxford (1027 records)
- ❖ IEEE (39 records)
- ❖ ITER (9 records)

Want to see what else is loaded on the platform?

Visit: <http://spotdocs.scholarsportal.info/x/RwZcBQ> (SPOTDocs login required)

Scholars Portal LibGuides

Make sure to take a look at our new Scholars Portal LibGuides for RefWorks and WizFolio, our books collections from Duke University Press and Iter Press and the top cited journals from our E-Journals platform. You can find them all at: <http://guides.scholarsportal.info/>

Have a comment or an idea for a new LibGuide? Contact Client Services Librarian Jacqueline Whyte Appleby: jacqueline@scholarsportal.info

In Other News:



Improving Access

Over the summer the Scholars Portal team began working with member libraries to install instances of the OCUL Usage Rights Database. The new licensing system is designed to support library staff, faculty, and students in ensuring proper usage of digital materials by making permissions clear and visible to users searching for resources.

RefWorks Update

The latest version of RefWorks is here! New features include the ability to create subfolders, a newly combined Organize and Share Folders tab that allows users to create, clear, rename, delete, and share citations all from one place, and the ability to check a specific folder for duplicate references.

One change to note is that, moving forward, new RefWorks users will require a login name that is unique across our server. This is a preliminary step towards the eventual phasing out of the Group Code login system. You may wish to suggest that students register with an institutional address as their login name.

ODESI

To help improve search results for students using our ODESI repository we've created some short videos that offer an introduction to the service and its functionality. You can access the videos from the ODESI homepage: www.odesi.ca under the title "Learning Tools"

Questions about Scholars Portal Services?

Questions about RefWorks, ODESI or other Scholars Portal services can be sent to Client Services Librarian Jacqueline Whyte Appleby: jacqueline@scholarsportal.info

SPUD statistics now COUNTER compliant

Scholars Portal has successfully completed the final stage of our external audit for COUNTER compliance for Journals and Books.

This certification is valid as of July 15, 2011 and can be maintained by conducting annual audits of the [SPUD](#) reports.

Need a SPOTDocs login? Want to join the SP listserv?
Contact Kerry Kelly: kerry.kelly@ocul.on.ca

Follow Scholars Portal on Twitter:
twitter.com/scholarsportal

Scholars GeoPortal

water

Sort by: **Relevance**

Search **Map**

Layers **Legend** **Download**

DMTI_2010_CanMapRL_Topo_LUR_ALL_PROV

Land Use

- Commercial
- Government and Institutional
- Open Area
- Parks and Recreational
- Residential
- Resource and Industrial
- Waterbody

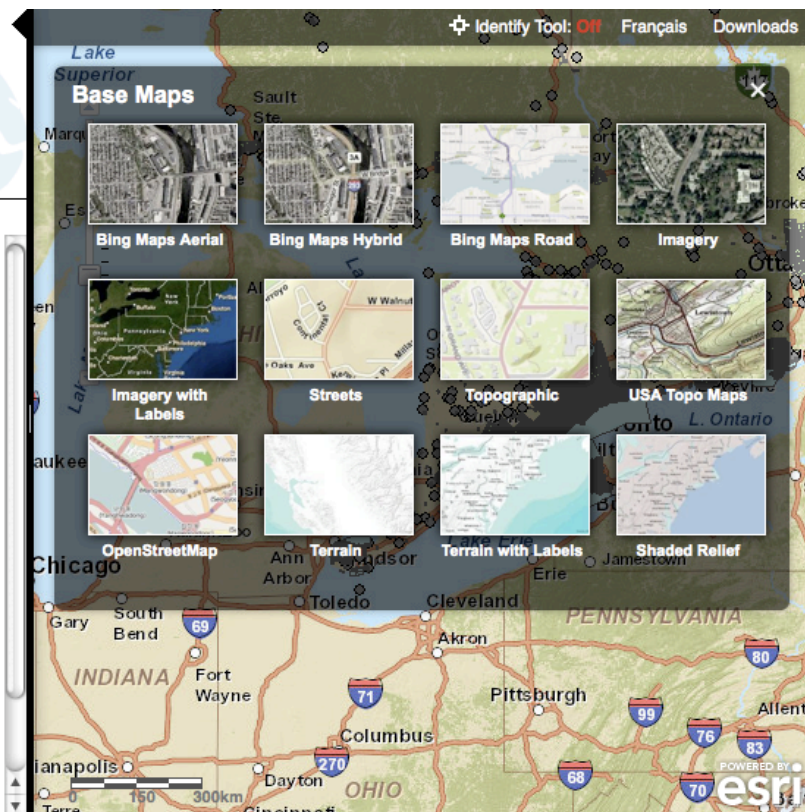
DMTI_2010_CanMapRL_POI_AER_ALL_PROV

Aerodromes

☐

World_Street_Map

☐



Scholars GeoPortal

OCUL's new geospatial data discovery tool

This month the OCUL announced the beta launch of [Scholars GeoPortal](http://gis.scholarsportal.info).

This new geospatial data discovery tool offers search, preview, and download functionality for a growing selection of datasets licensed by Ontario university libraries, covering topics including land use, census boundaries, transportation networks, points of interest (such as schools, airports, and golf courses), orthophotography, and more.

The beta launch is accessible to OCUL member library staff and their patrons. Members are encouraged to explore and test the site, provide feedback and begin to prepare training materials for the official launch in the new year.

What to Expect Now:

At this time users will be able to access selected datasets from:

- ❖ DMTI Spatial
- ❖ Statistics Canada boundary files

- ❖ The Ontario Ministry of Natural Resources (as part of the Ontario Geospatial Data Exchange)

Users will also be able to experience the following functionality:

- ❖ Bilingual search interface
- ❖ Search capabilities, including geographic search
- ❖ Standards-compliant metadata (North American Profile of ISO 19115)
- ❖ Data viewing within the Scholars Portal web mapping application
- ❖ Data download based on a selected area of interest

What to Look for in 2012:

Portal enhancements planned for the official launch include:

- ❖ Personal User Accounts
- ❖ Ability to mark and save results & maps
- ❖ Group Spaces for collaborating (share data & maps)

- ❖ Enhanced mapping tools
- ❖ More robust datasets

New data will be loaded onto the platform on an ongoing basis.

Visit: gis.scholarsportal.info

Feedback: gis@scholarsportal.info

Health Data Update

One of the initial goals of the Geospatial Portal project was to obtain health data collections, recognizing its research importance in Ontario. In March, OCUL held a Health Data Summit of researchers, librarians, data providers, and health care providers to build relationships and discuss current practices and challenges surrounding access to health information, including data gaps in academia and complex issues of responsibility, confidentiality, and anonymization. With an improved understanding of the time and effort that will be involved, OCUL remains committed to continue seeking health

datasets that can be included in the Geospatial Portal in the future.

Current initiatives include:

An OCUL presentation at the CIHI/ Statistics Canada Health Data Users Conference, in Ottawa in September.

An OCUL partnership with the Population Health Improvement Research Network (PHIRN) to create the Ontario Population Health Index of Databases (OPHID). To be launched in September, this is an index of databases that deal with the health of populations, including organization and contact details for the databases.

ODESI continues to add health-related surveys from Statistics Canada as they become available. Recent additions: the 2010 Household and Person files for the Canadian Tobacco Use Monitoring Survey, the 2008-09 Canadian Community Health Survey, and the 2008-2009 Youth Smoking Survey.

Of Note...

News for Public Service Librarians

The [Public Services Advisory Group](#) (PSAG) has launched a newsletter for front line member library staff to ensure they are getting the information they need. The newsletter will be sent out on the Scholars Portal listserv and will also have a permanent home on the SPOTDocs wiki. Read the first edition here: <http://spotdocs.scholarsportal.info/display/PSWG/PSAG+Newsletter> (SPOTDocs login required)

Want to join the SP listserv? Contact Kerry Kelly: kerry.kelly@ocul.on.ca

Staffing News

@ Scholars Portal

Software Developer Mike Kyffin and Data Services Metadata Librarian Amber Leahey have joined the Scholars Portal Team this summer along with Virtual Reference Librarian Klara Maidenberg, and System Support Specialist Harpinder Singh. To get in touch with any member of the team visit the Contact Us page on the Scholars Portal website: <http://spotdocs.scholarsportal.info/display/sp/Contact>.

@ OCUL

OCUL is pleased to announce that Carol Stephenson will join OCUL as Projects Officer, effective December 1st. Carol will be working alongside retiring OCUL Projects Officer, Faye Abrams this fall as she prepares to take on the role.



Nipissing University's new
Harris Learning Library opened in July

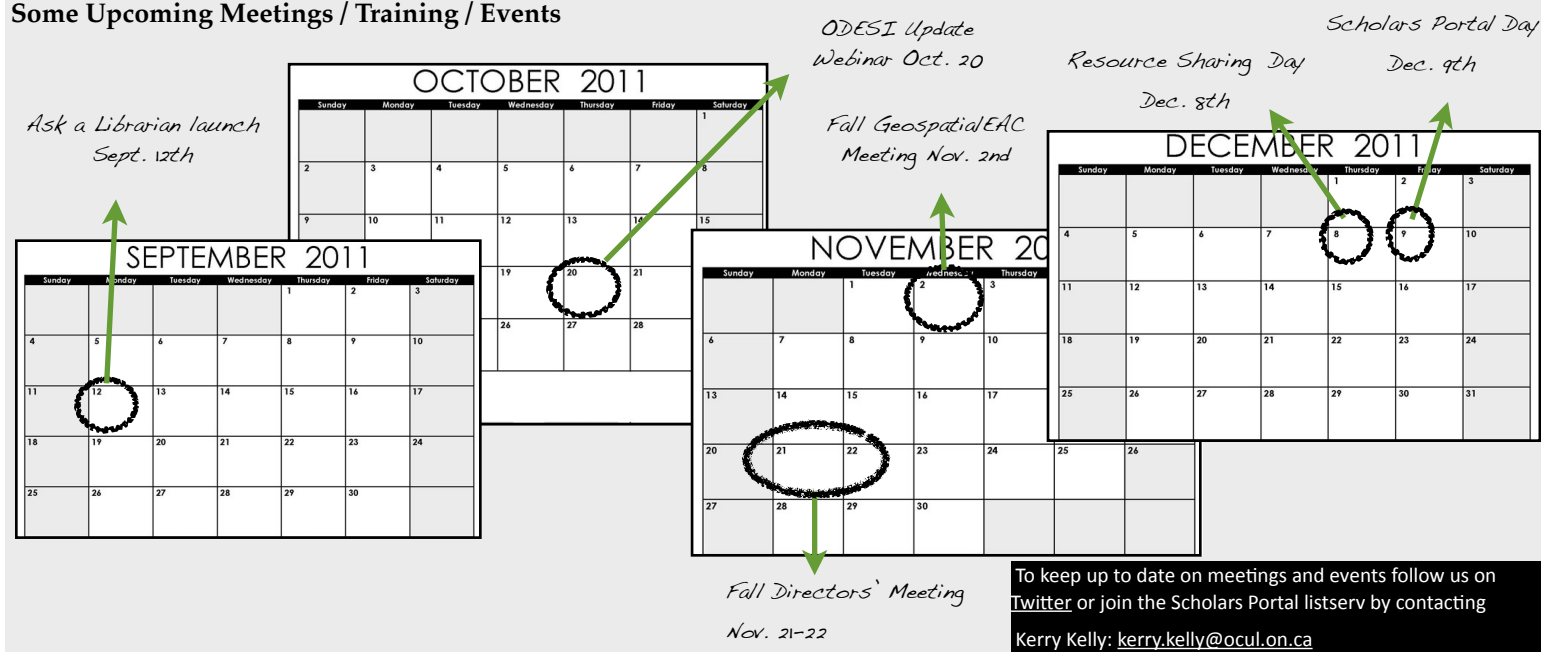
Preservation

Digital Services Librarian Stephen Marks hosted a webinar in August to update members on OCUL's Trusted Digital Repository initiative, including preparations for the upcoming audit. In the session he also introduced the new Scholars Portal Dataverse initiative. More information on OCUL's commitment to preservation can be found on our website: http://www.ocul.on.ca/about/OCUL_Preservation.html.

Missed the webinar? Find it here: <http://www.ocul.on.ca/docs/OCUL%20Webinars.html>

Want to learn more about the Dataverse initiative? Check out the new LibGuide: <http://guides.scholarsportal.info/content.php?pid=227902&sid=1885812>

Some Upcoming Meetings / Training / Events



OCUL Contacts:

Kathy Scardellato
Executive Director

416-946-0578 (Tel)
416-978-6755 (Fax)

kathy.scardellato@ocul.on.ca

Faye Abrams
OCUL Projects Officer

416-978-4211 (Tel)
416-978-6755 (Fax)

faye.abrams@ocul.on.ca

Kerry Kelly
Communications &
Member Engagement Officer
416-978-5338 (Tel)
416-978-6755 (Fax)

kerry.kelly@ocul.on.ca

Alex So
Business Officer

416-978-0894 (Tel)
416-978-6755 (Fax)

alex.so@ocul.on.ca